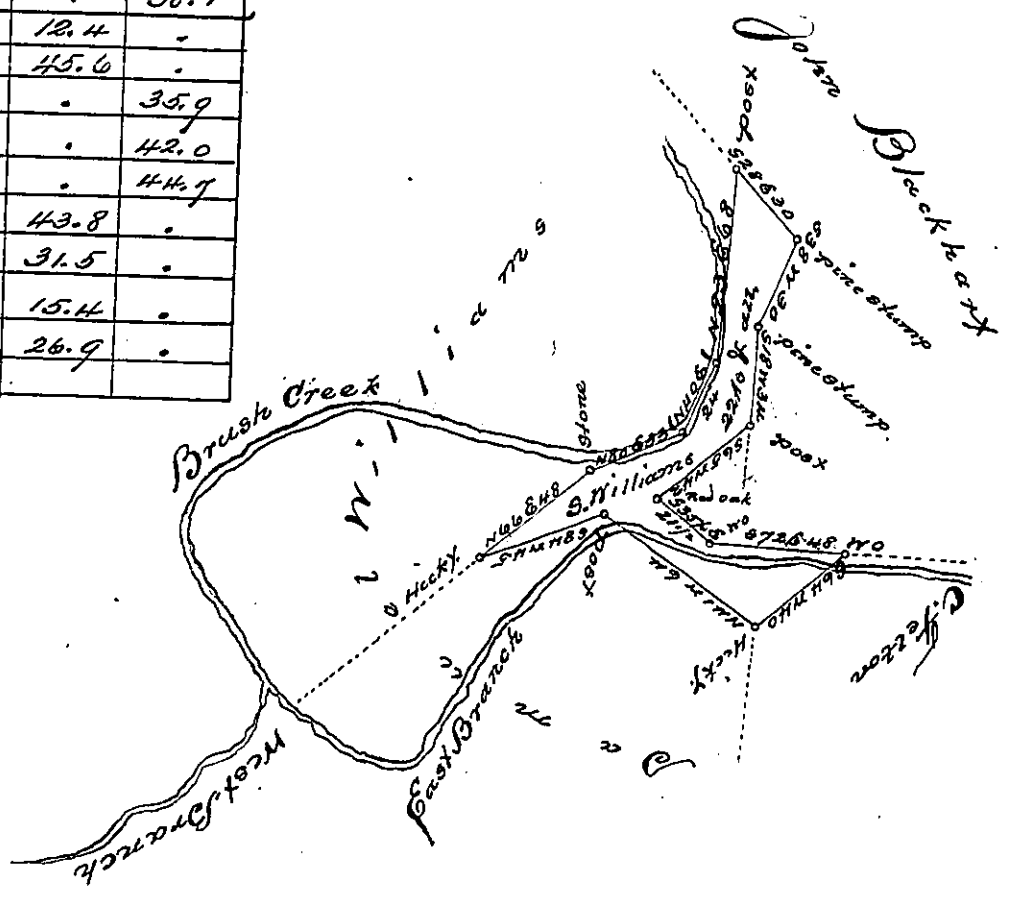


			N	S	E	W
S.	28.	E.	30	.	26.5	14.1
S.	38.	W.	30	.	23.6	18.5
S.	18.	W.	34.	.	32.3	10.5
S.	65.	W.	42	.	17.7	38.1
S.	35 1/2.	E.	21 1/2	.	17.5	12.4
S.	72.	E.	48	.	14.8	45.6
S.	64.	W.	40.	.	17.5	35.9
N.	41.	W.	64.	48.3	.	42.0
S.	84.	W.	45.	.	4.7	44.7
N.	66.	E.	48.	19.5	.	43.8
N.	80.	E.	33.	5.7	.	31.5
N.	40.	E.	24.	18.4	.	15.4
N.	23.	E.	68.	62.7	.	26.9



Situated on the waters of Brush Creek in Providence Township Bedford County Containing 22 acres with the usual allowance of six per Cent for Roads &c. Surveyed for Solomon Williams the 26th day of March 1833, on warrant dated March 20th. 1833.

To Jacob Spangler Esq. *sg*
 John Bennett D.S.

IN TESTIMONY that the above is a copy of the original remaining on file in the Department of Internal Affairs of Pennsylvania, made conformably to an Act of Assembly approved the 16th day of February, 1833, I have hereunto set my Hand and caused the Seal of said Department to be affixed at Harrisburg, this fourth day of August 1898.

James W. Latta
 Secretary of Internal Affairs.